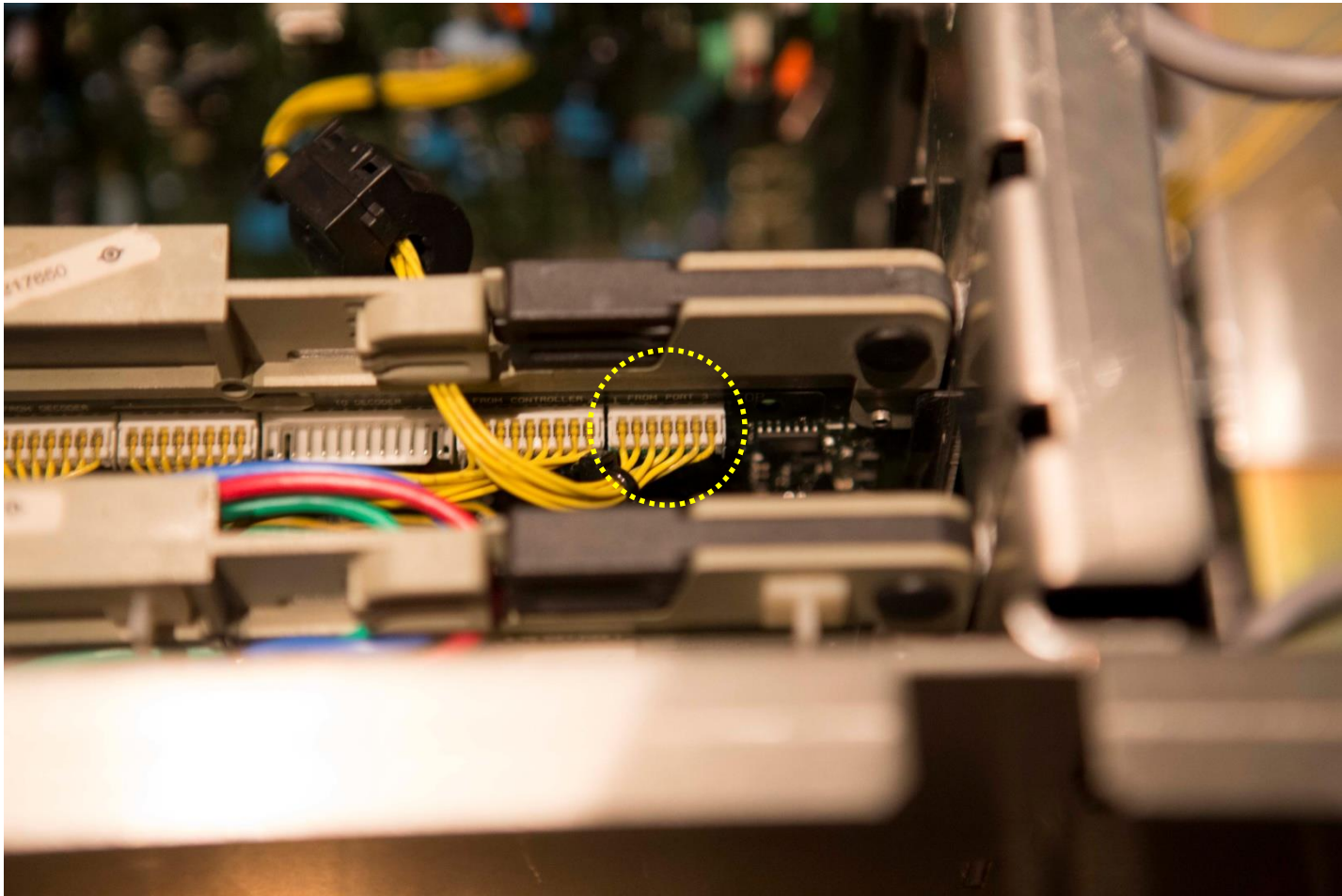


# BARCO-FULLHD installation

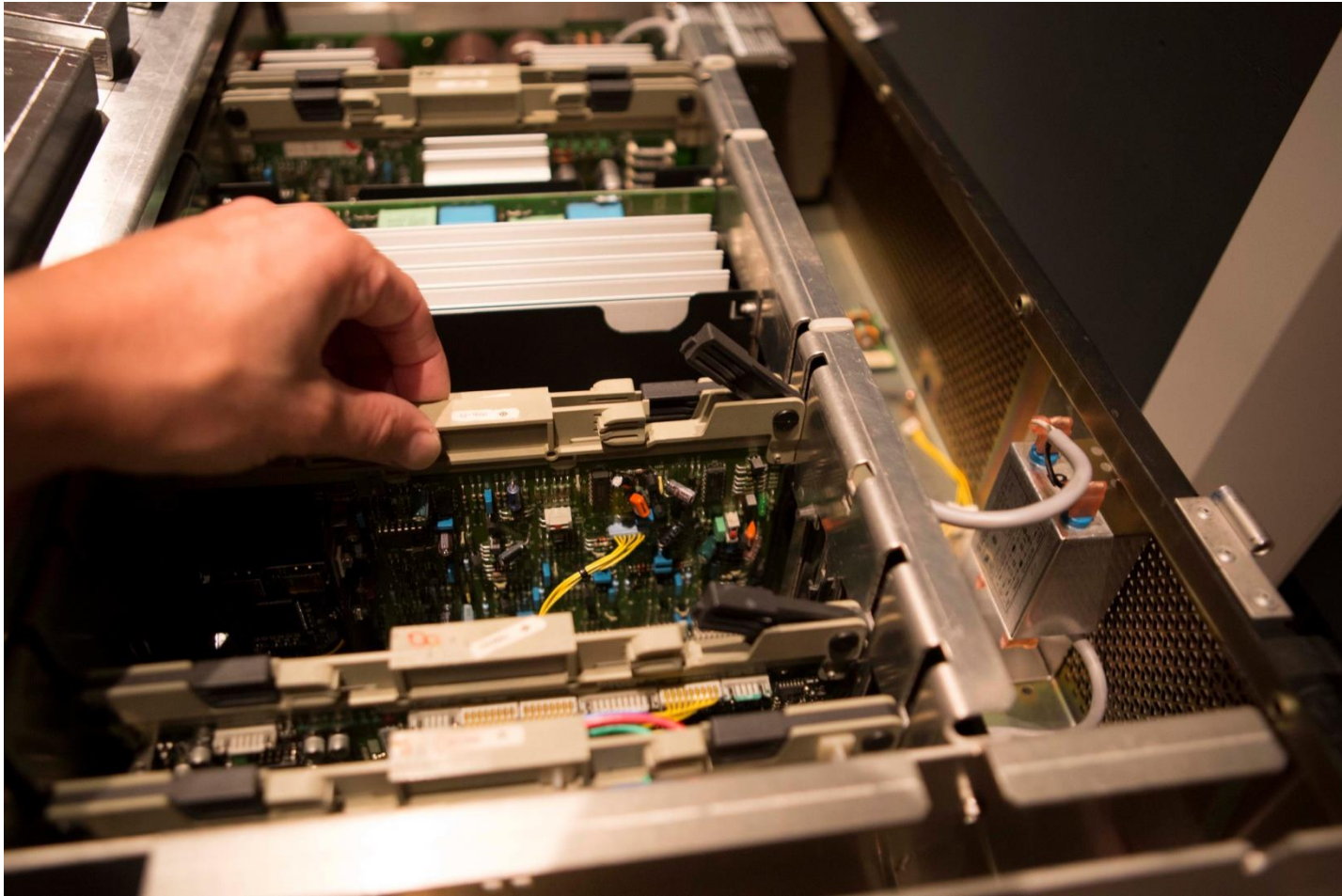
Moome Liu

2014/09/15

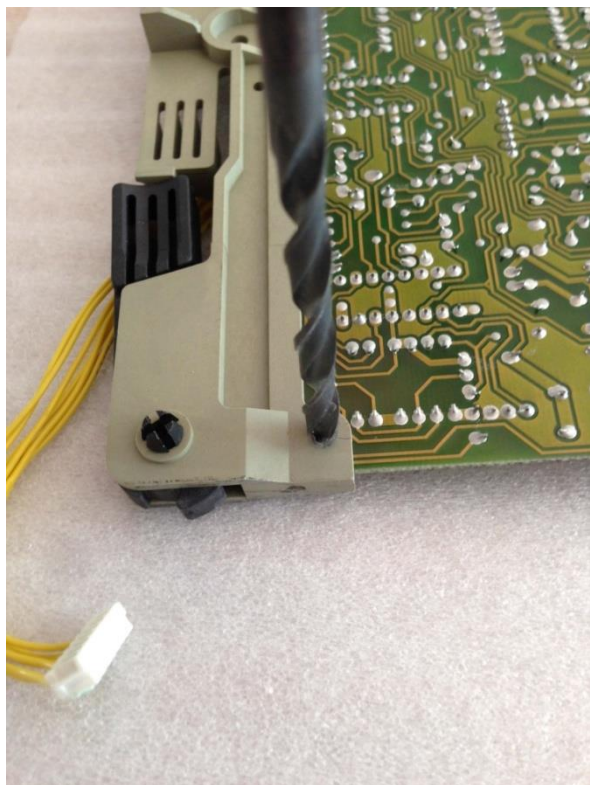
Disconnect the port3 card RGB cable from the RGB input card



# Remove the original port3 card

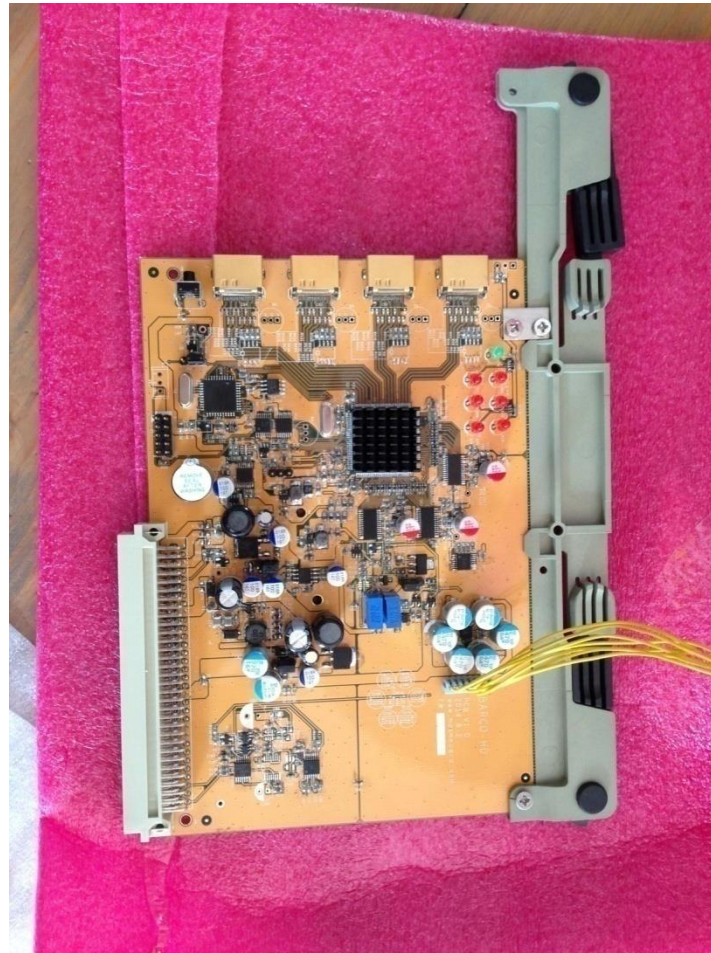


Use drill to take the bracket off your existing port 3 board by drilling out the rivets

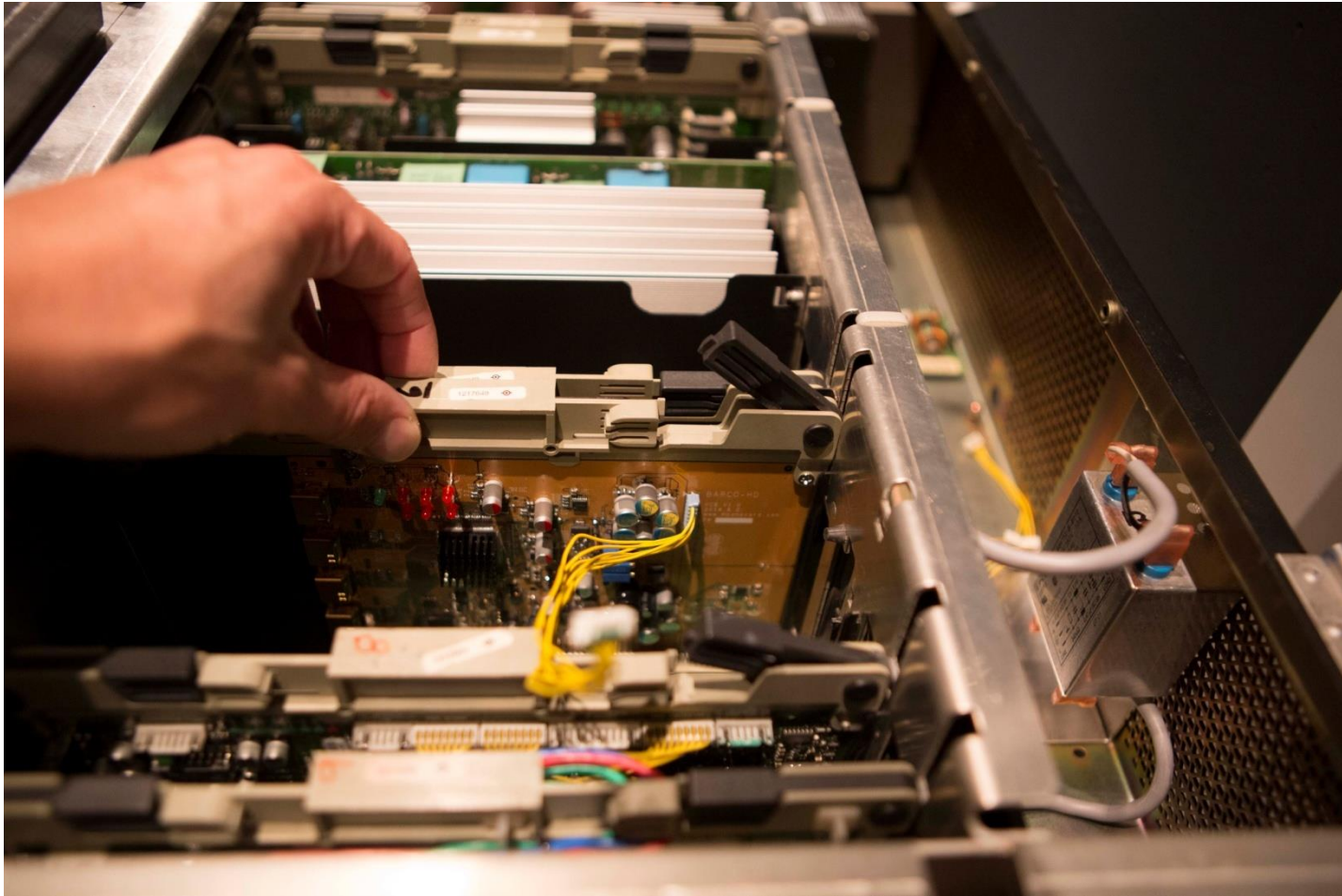




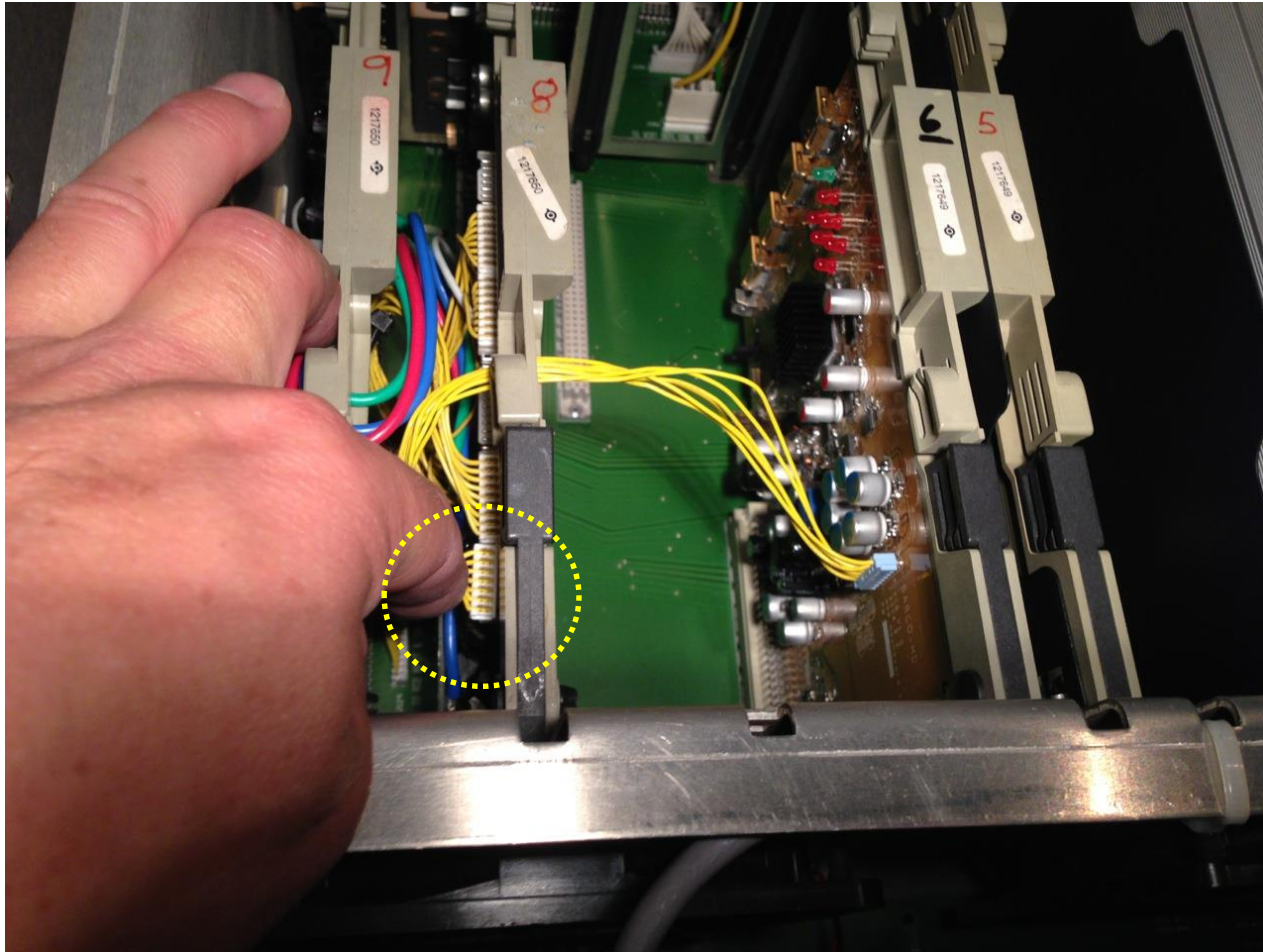
Completed BARCO-FULLHD card with  
the bracket attached:



Insert to BARCO-FULLHD in the original  
port3 slot

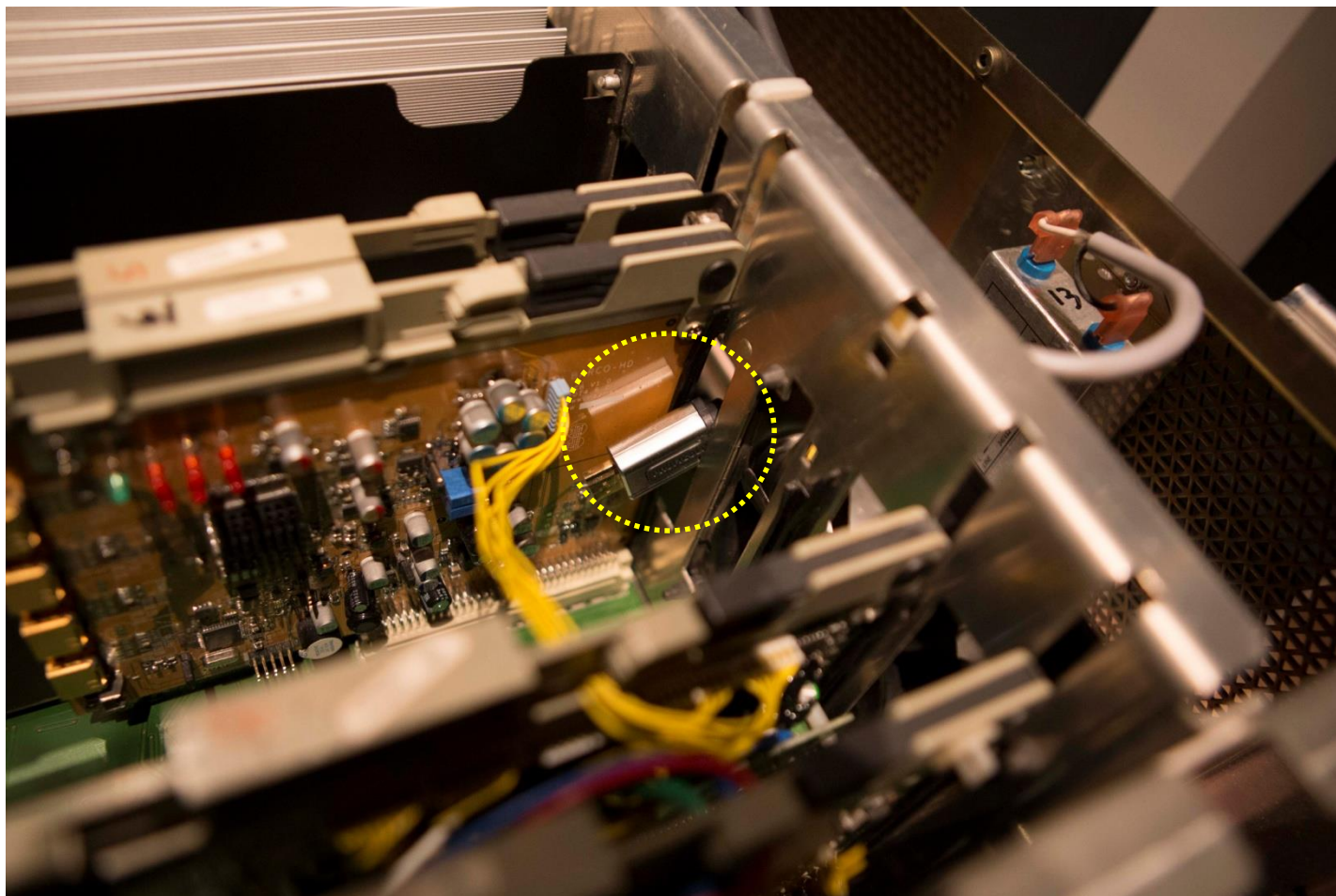


# Connect the RGB input card cable to the BARCO-FULLHD

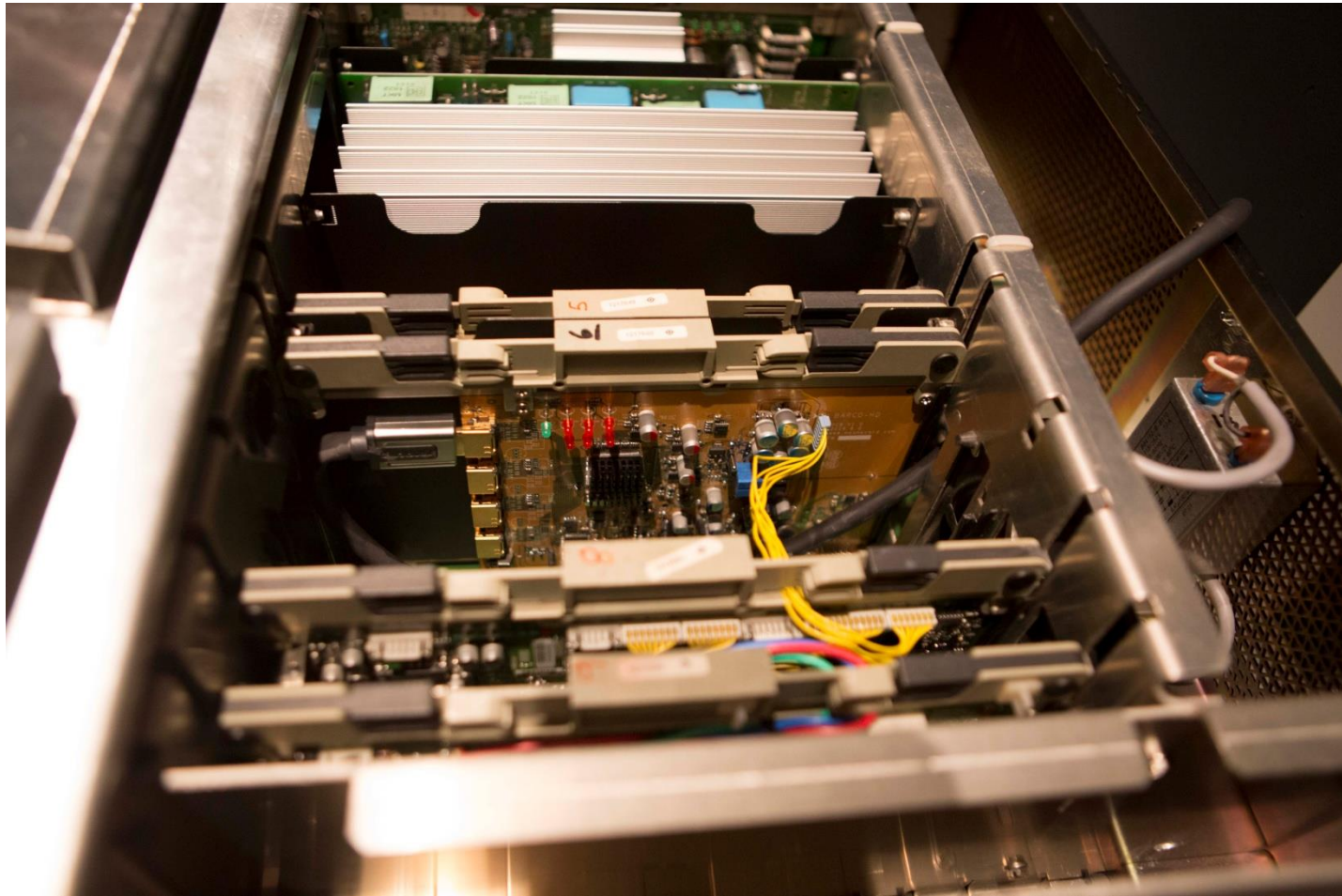




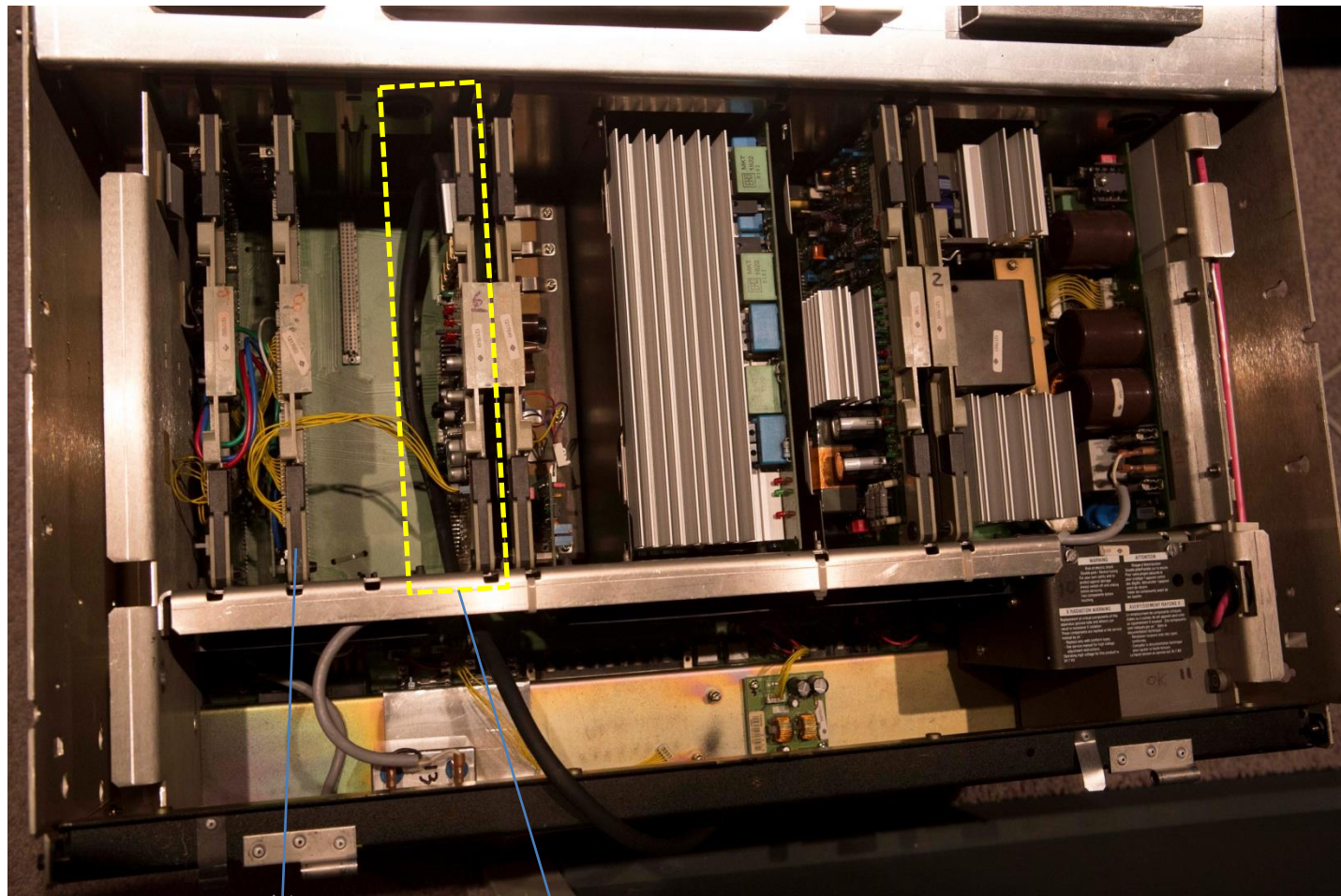
Pass your HDMI cable(s) in through an available opening or hole you drill



Connect the HDMI cable(s) to the  
BARCO-FULLHD



# TOP view



RGB INPUT CARD

BARCO-FULLHD

# Plug the port3 control kit into the port3 DB9 connector on the outside of the projector

